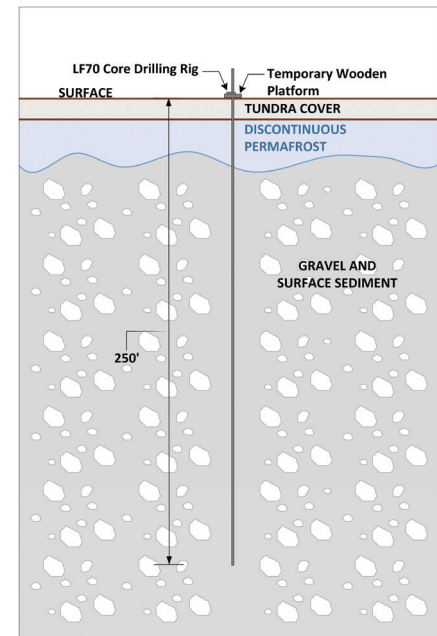


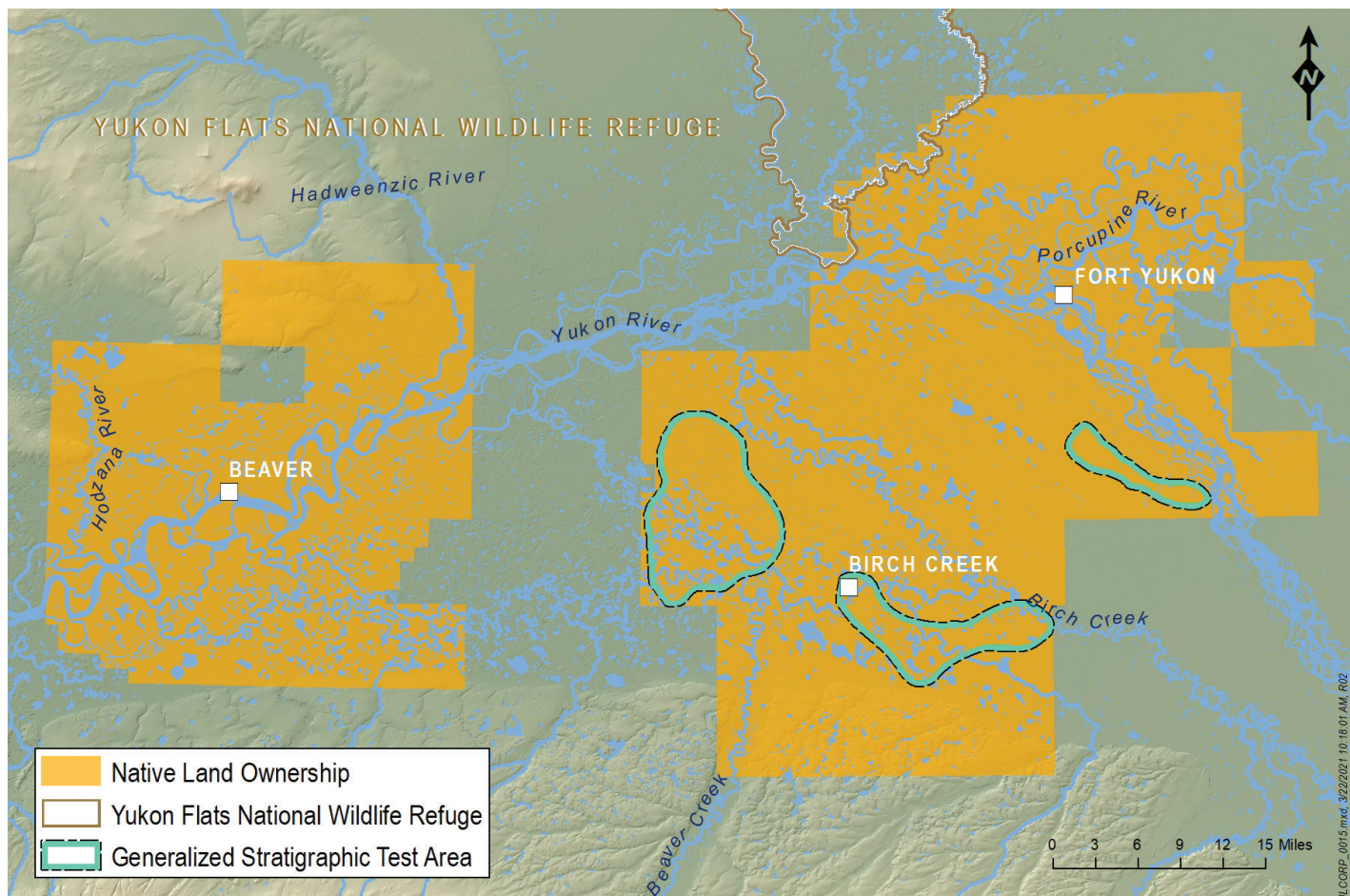
HILCORP SHALLOW STRATIGRAPHIC TEST PROGRAM SUMMER 2021

During the summer of 2020, Hilcorp conducted an airborne gravity and magnetics survey over the Yukon Flats region as the initial phase of their exploration program. The next step is to further evaluate the geology via a shallow stratigraphic borehole program beginning in May 2021.

Glacial and river deposits have created a thick sequence of gravel and soft sediments over the bedrock. This stratigraphic test program will advance shallow boreholes to a depth of 250 feet below the surface to collect core samples and increase our understanding of the regional geology.



The areas Hilcorp will be conducting the stratigraphic testing are shown on the map below.

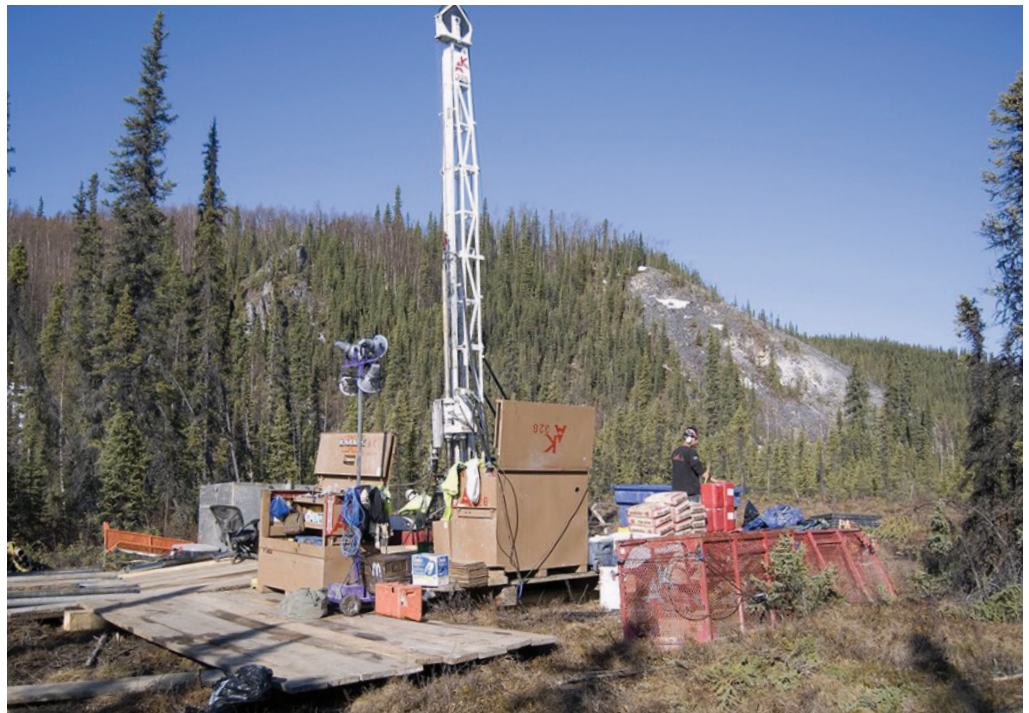


2021 PLANNED SCHEDULE

Mid-May	Mid-June	Mid-June to July	Early August
Conduct reconnaissance of all drill sites when snow free to confirm and develop helicopter access route	Develop camp at Birch Creek	Complete up to 15 stratigraphic tests	Demobilize from Birch Creek

OPERATIONS SUMMARY

- Access to each site will be via helicopter from a base of operation at Birch Creek
- Drilling equipment and all supplies will be flown in and moved from site to site by helicopter
- The boreholes will be drilled about the same depth of a typical water well – approximately 250 feet below the surface
- The drilling will be completed by a small rig placed on cribbing at the drill site. Each borehole will take 2 to 3 days to complete
- The boreholes will be plugged and abandoned with any cuttings created from drilling and bentonite to seal the borehole. Any disturbed tundra will be placed to its original location



Example of heli-portable drilling operations that will be conducted in 2021

Need more information?

Contact: Lands and Natural Resources Department | lands@doyon.com | 907-459-2030